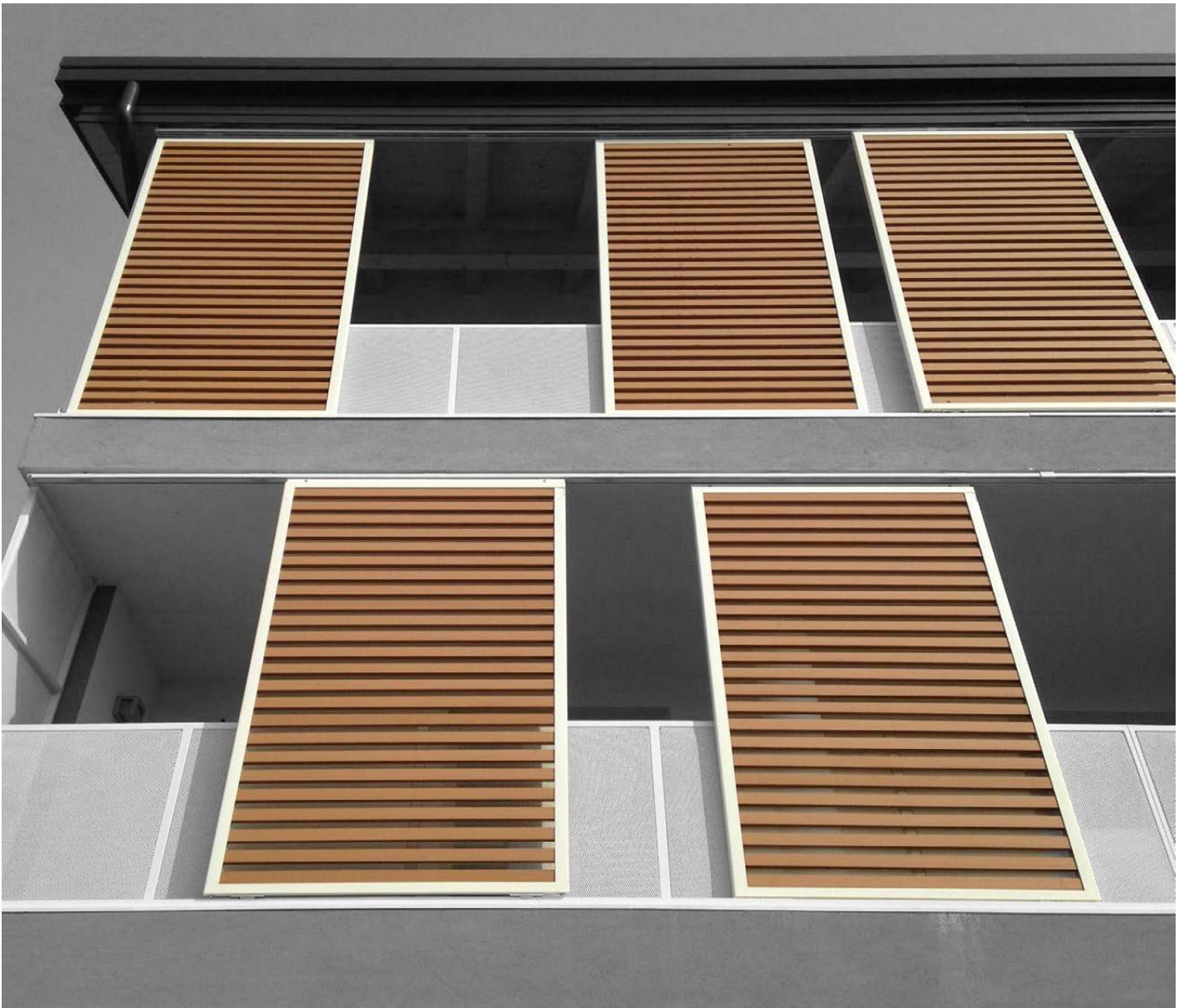




*materia infinita*<sup>®</sup>

# DATASHEET

REV\_02/22

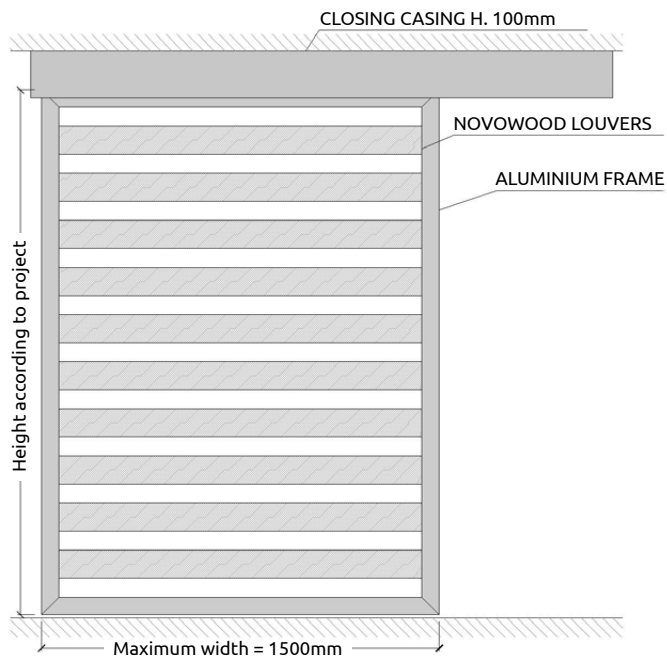


## **SLIDING PANELS WITH NOVOWOOD LOUVERS**

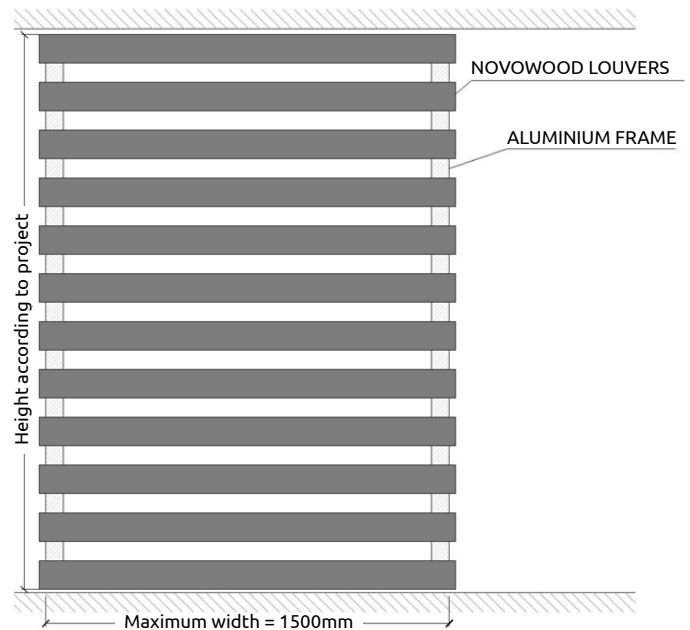
# FEATURES

## 1 Components of sliding panels

Sliding panels are composed by an aluminium frame, which can be visible or hidden, and upper and lower guides. Panels have a maximum width of 1500mm and height which is defined according to the process. Inside the frame you can place Wood Plastic Composite louvers Infinity Plus 30, 60, 75 and 90, provided with a special inner aluminium tubular core; in case of hidden frame solution it is also possible to use Infinity Plus 120. The distance between profiles can be defined according to the design needs.



Solution with visible frame



Solution with hidden frame

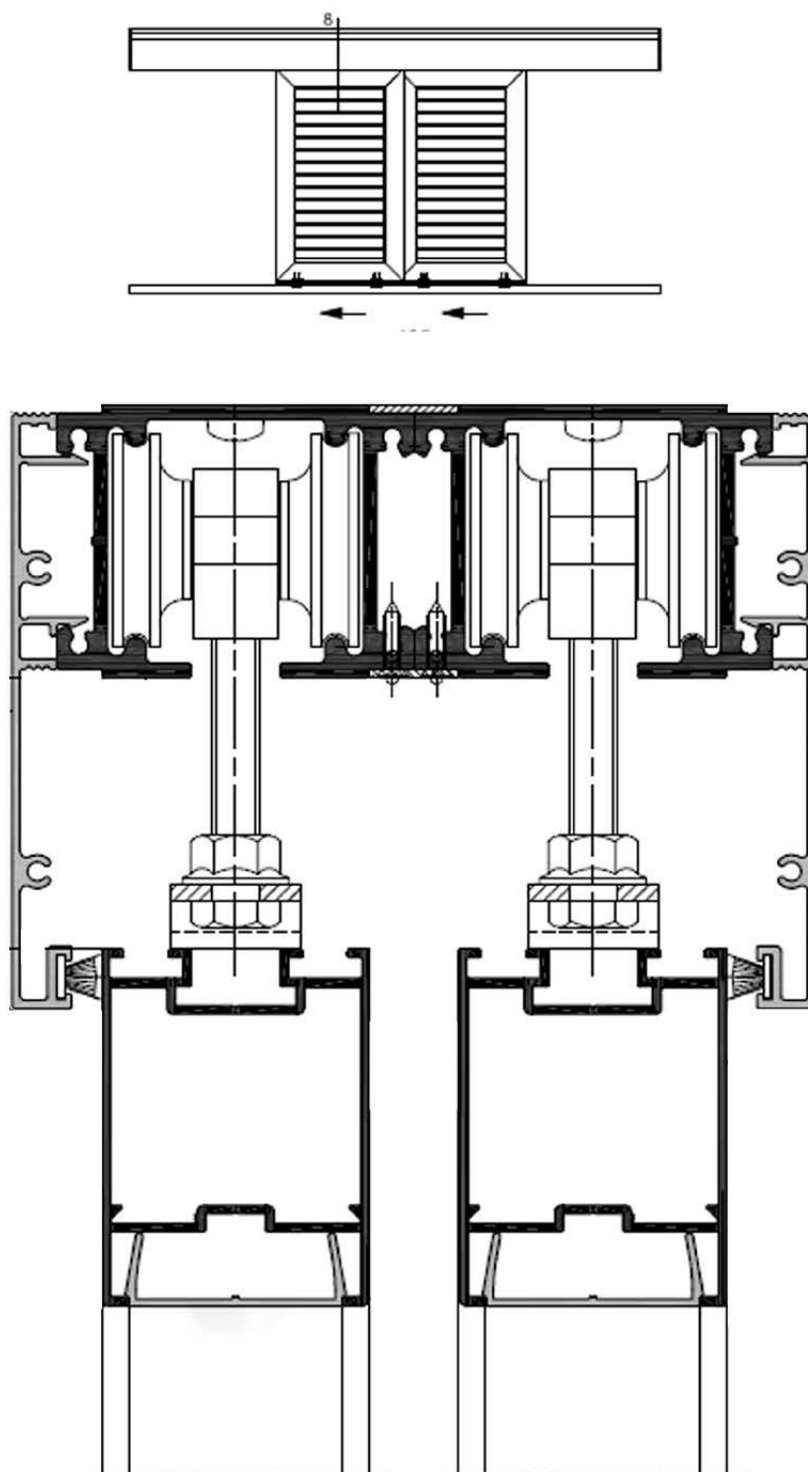


THE AIM OF THIS DOCUMENT IS TO PROVIDE OUR CLIENTS WITH GENERAL RECOMMENDATIONS. IPERWOOD EXPRESSLY RECOMMENDS THAT OUR CLIENTS AND/OR DESIGNERS USE THE CONSULTANCY SERVICES OF AN ENGINEER OR DESIGNER QUALIFIED IN TERMS OF THE SPECIFIC APPLICATION AND INSTALLATION, AS WELL AS IN TERMS OF COMPLIANCE WITH THE PROJECT REQUIREMENTS, APPLICABLE CODES AND CURRENT REGULATIONS AND LEGISLATION, AND TESTING REGULATIONS AND STANDARDS. IN ALL CIRCUMSTANCES PLEASE CHECK CURRENT LOCAL CODES AND PROJECT REQUIREMENTS TO ENSURE THEIR CORRECT APPLICATION.

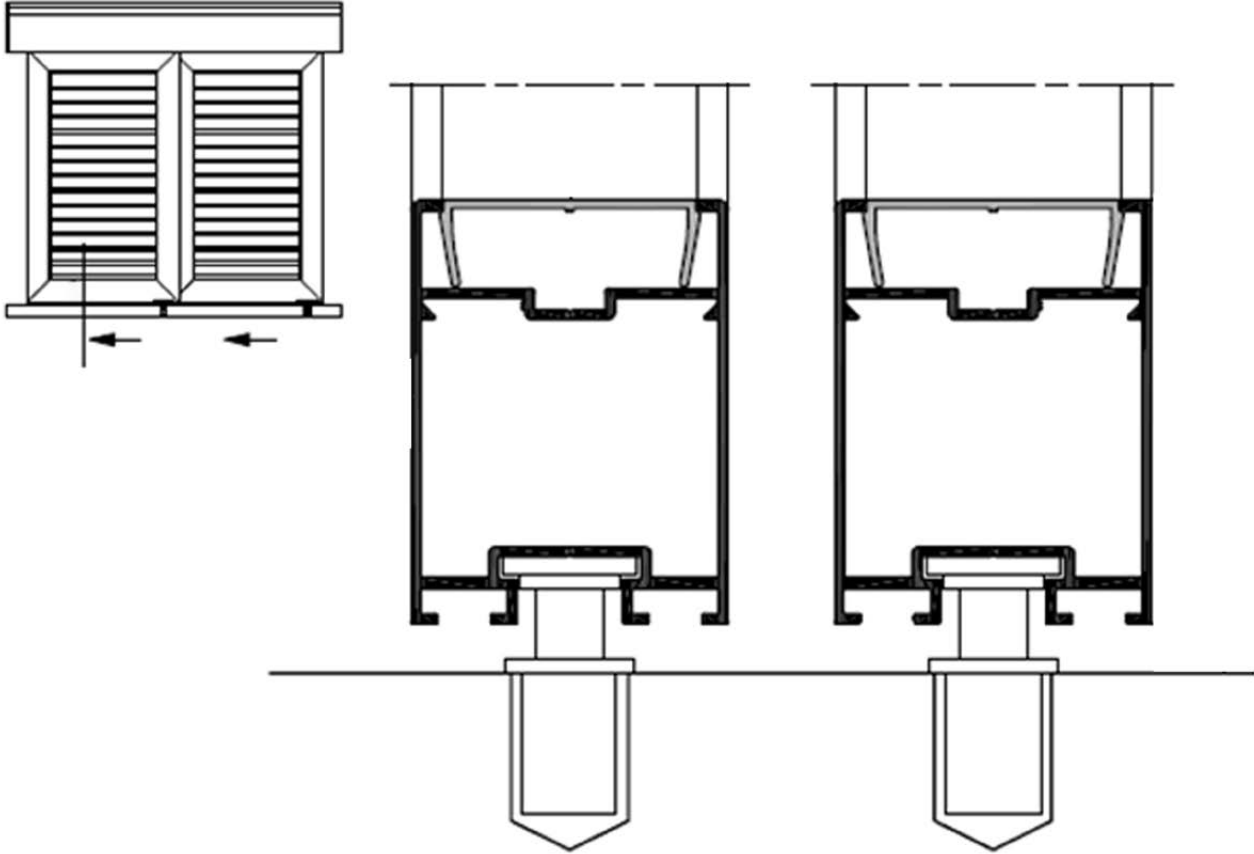
# SLIDING SOLUTIONS

## 1 Sliding in axis with intrados

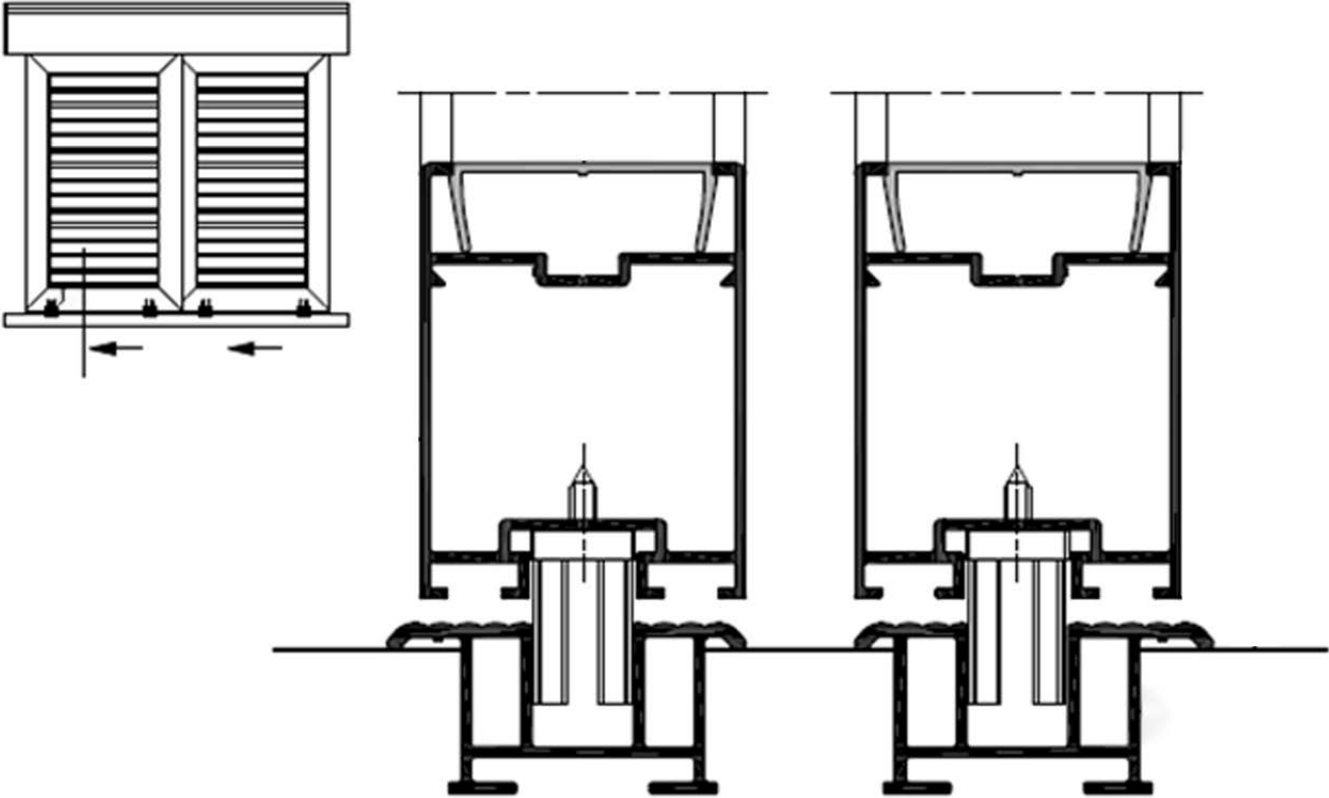
Upper portion details



Lower portion detail - SOLUTION A

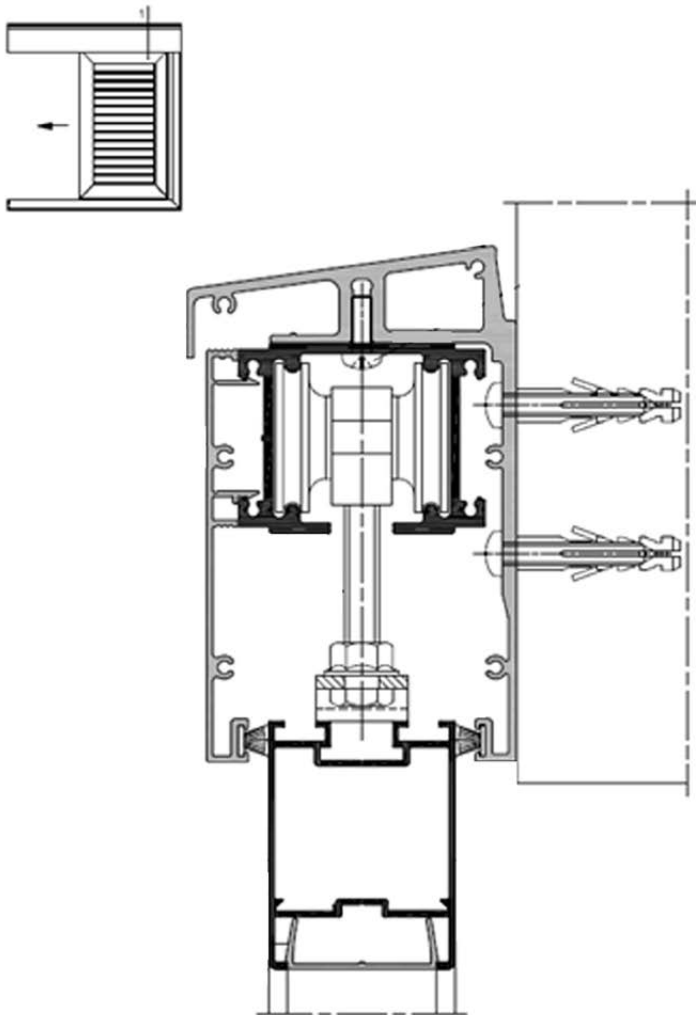


Lower portion detail - SOLUTION B

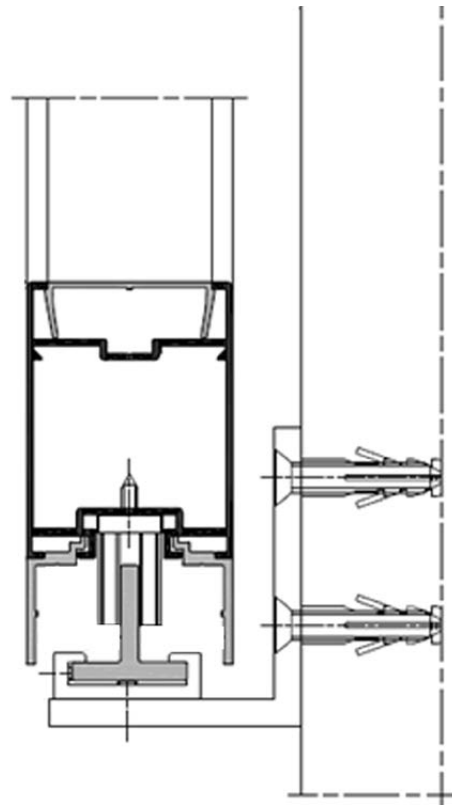


## 2 Sliding out of the intrados axis

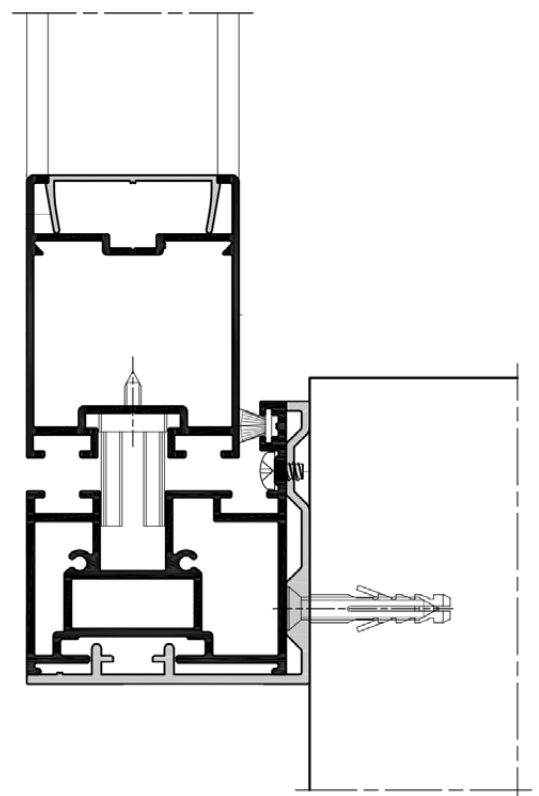
Upper portion detail



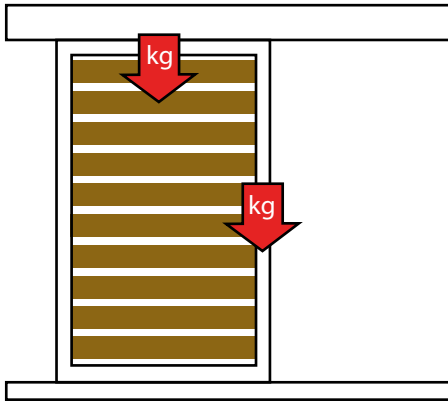
Lower portion detail  
SOLUTION A



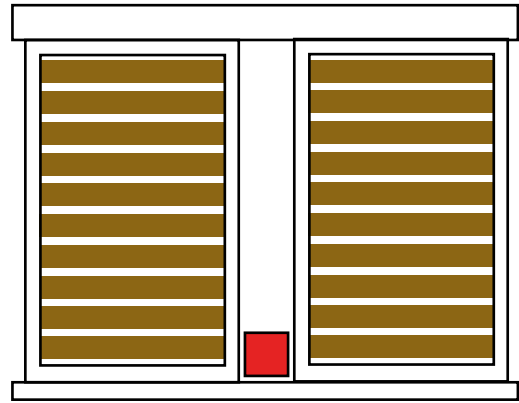
Lower portion detail  
SOLUTION B



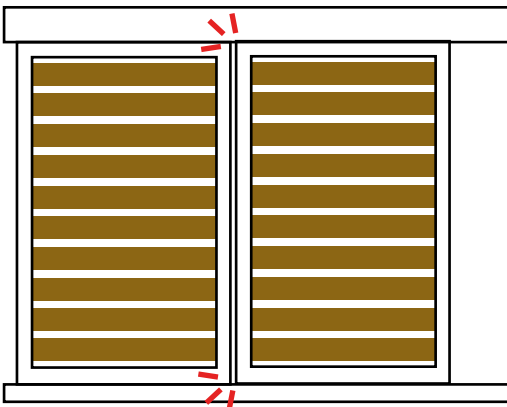
# RECOMMENDATIONS FOR USE



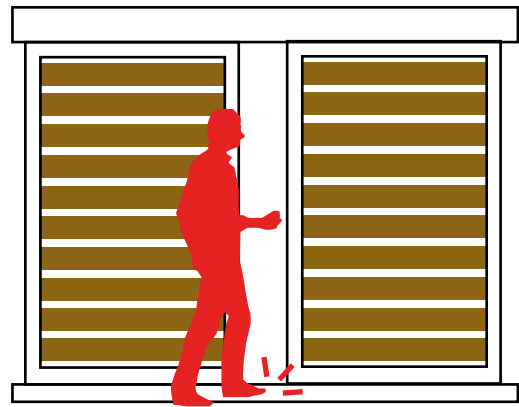
Do not load the frame and louvers with additional weight.  
Do not lean on sliding panels.



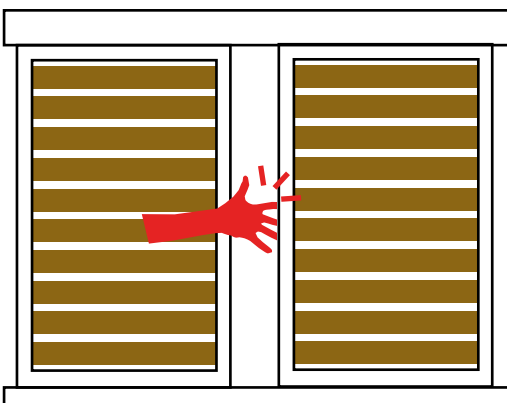
Do not insert object between the mobile frame and the fixed frame or between the panels.



Move the panels with caution and do not bang them against each other or against the walls.  
In case more than one panel is placed on the same guide it is necessary to move them one by one.



Risk of tripping or falling. In case children or people with psychological handicaps have access to the panels they must be forbidden to move them.



Attention! Risk of crushing. The sudden sliding of a panel can cause injuries. Do not insert the hands between the panels when they are being moved.



## ATTENTION!

The sliding panels can not substitute a parapet.

In case of anomalous sliding call a specialized technician.

The possible regulations and substitutions of worn or damaged parts of fixtures must be carried out exclusively by qualified personnel.

# MAINTENANCE AND CLEANING

## 1 Cleaning of aluminium fixtures

Respecting the following maintenance and cleaning norms, aluminium fixtures will maintain the performances of initial air-tight and superficial beauty. In order to preserve these qualities, the exposed profiles and surfaces must undergo a regular cleaning and maintenance.

The sets of specific products for cleaning and maintenance of aluminium fixtures are available upon request.

The intervention frequency depends on the environment around the building and it must be higher in proximity of coasts, industrial areas and highly polluted zones.

The detergent must not be abrasive, not ammonia based, not chlorine based (for example: bleach) or alkaline or acid products.

Cleaning the aluminium profiles is very easy, it is sufficient to carefully pass a sponge over them or a soft cloth wet with the proper detergent.

It is highly recommended to clean the surfaces when they are not exposed to heat sources and rays of sun.

### **DO NOT USE:**

- Alkaline aggressive chemical products (example: ammonia)
- Strong acids
- Hypochlorites (example: bleach)
- Oxidizing products
- Nitro-acetone solvents
- Abrasive cloths

### **WHAT TO USE:**

Use a specific detergent (provided by Novowood upon request) for the cleaning of the aluminium parts, with anodised superficial finishing or varnished finishing.

### **NOTES:**

Anodised or varnished aluminium can not get in touch with wet mortar or plaster. During the masonry work it is therefore suggested to protect frames, in order to avoid possible damages.

## 2 Maintenance of the sliding system

In addition to the cleaning of profiles, it is necessary to periodically maintain the sealing gaskets and accessories.

Mobile parts and all closing points must be lubricated with silicone spray, at least once a year. Do not use oil or grease.

### **ATTENTION:**

Repairing must be carried out by competent personnel, in order to not compromise the safety requests for the final user.

All interventions of regulation of mechanisms, parts substitution, the unhooking and hooking of the panels, must be carried out by specialized personnel.

In case of doubts and/or malfunctions please contact Novowood at the phone numbers on this document.

### 3 Periodic checks

All mechanical and metallic parts are subject to wear, it is therefore recommended to check all the moving parts with an approximate frequency of no more than 60 days.

It is specifically appropriate:

- To check that there are no residuals or foreign bodies in the guides and the slots of the fixture
- To check that there are no signs on the panel that can indicate a bad maintenance state
- To check the air-tightness of the fixing points
- To check the correct tightening of the corners of the aluminium structure
- To check the correct tightening of the nuts that block the upper runners
- To check the integrity of the upper and lower runner
- To check the proper fixing of the stop buffers
- To check the proper fixing of lower and upper guides
- To periodically check the state of integrity of the hardware, eliminating possible oxidation outbreaks

### 4 Cleaning of Wood Plastic Composite louvers

Novowood wood plastic composite does not require special maintenance and it is easy to clean thanks to the studied combination of fibres, polymers and additives. It is always advisable to wash the material every 30 days with cleaning products (supplied on request), if you use the pressure washer, keep the nozzle at a distance of 30 cm from the floor. In areas particularly susceptible to the formation of stains and marks (bars, restaurants, etc.), we recommend the application of the "WPC Shield" protective product (supplied on request) in order to reduce the absorption of stains from external agents.

In order to remove localized stains it is advisable to use a special spray "WPC stains remover" (supplied upon request) which may produce a slight hue change in the intervention area.

Although the product is resistant to fungi and moulds, sometimes some organic material deposits may form on the surface and with the passage of time may give rise to localised moulds.

For removing moulds, algae and fungi use hot water and "WPC Cleaner" (supplied on request). If moulds, algae and fungi have settled for a long time, often the material needs further treatment. However, the risk can be reduced by keeping the products clean, dry and ensuring good ventilation.

For any other necessity regarding the wood plastic composite Novowood products please refer to "Data sheet use and maintenance of Novowood products", available on the website [www.novowood.it](http://www.novowood.it) in the download section.



# MAINTENANCE BOOK

Date	Reason	Executed operations



**NOVOWOOD**  
HEADQUARTER  
Via E. da Rotterdam, 29  
44122 Ferrara (FE)

+39 0532 732737  
info@novowood.it

---

[www.novowood.it](http://www.novowood.it)